

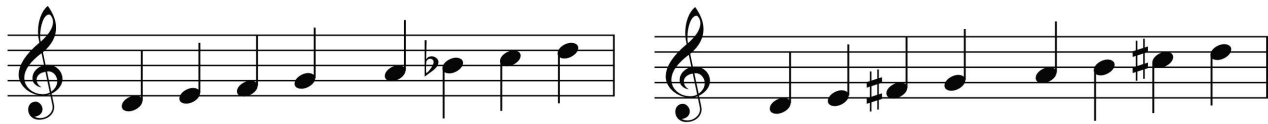


## Homework Assignment #11—Minor Keys and Key Signatures

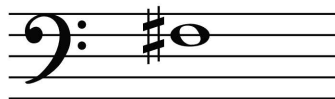
### Due Friday, March 11th

Name: \_\_\_\_\_

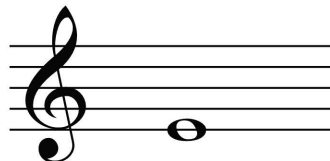
1. Relative major and minor keys...
  - A. Share the same collection of notes but start on different notes
  - B. Start on the same note but have a different collection of notes
  - C. Share the same collection of notes and start on the same note
  - D. Start on different notes and have a different collection of notes
2. Are the following pair of scales related as **Relative Keys** or **Parallel Keys** (circle one)?



3. If the note shown here is  $\hat{1}$  of a minor scale, what is the relative major?



4. If the note shown here is  $\hat{3}$  of a major key, what is the relative minor?



5. Identify the minor key represented by these key signatures.



\_\_\_\_\_



\_\_\_\_\_



6. Write in the key signature for these minor keys.

Staff 1 (Treble clef): d, b, g, a, c, e, f#

Staff 2 (Bass clef): a, f#, b, g, d, c, e

Staff 3 (Bass clef): c, f#, b♭, c#, g, b

7. Name the two relative major and minor keys represented by these key signatures. Write the major key with a capital letter and the minor key with a lower case letter.

Staff 1 (Bass clef): Key signature with two sharps (F# and C#)

Staff 2 (Treble clef): Key signature with two sharps (F# and C#)

8. For each minor key given, add the relative major and provide their shared key signature in the staff.

Staff 1 (Treble clef): d/F, b, c, a, g, e, f#

Staff 2 (Bass clef): a, d, f#, b, c, e, g

9. For each key listed, provide two key signatures: one for each of the parallel major and minor keys that share the same tonic note.

Staff 1 (Treble clef): G, C, D