



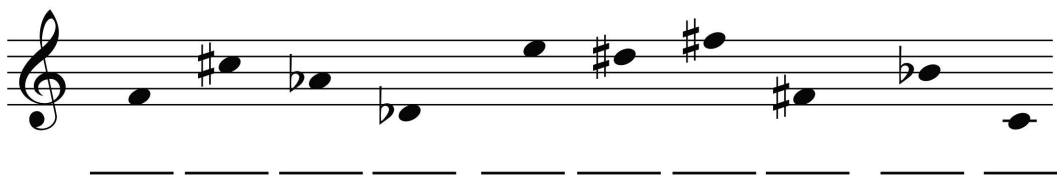
Homework Assignment #3—Accidentals and the Grand Staff

Due Tuesday, February 8th

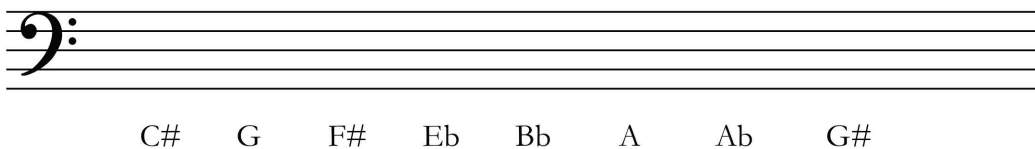
Name: _____

I. Accidentals

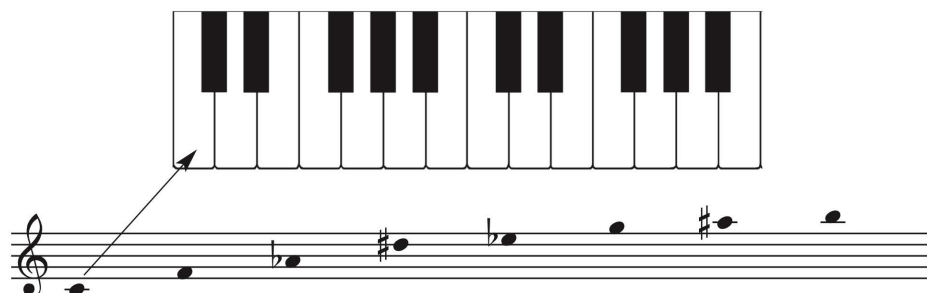
1. A flat sign (\flat) _____ a musical note by one _____. A sharp sign (\sharp) _____ musical notes by one _____.
2. Enharmonic notes are notes that **Sound** / **Look** (circle one) the same but **Sound** / **Look** (circle one) different.
3. Below this treble staff, write the note names for the following noteheads.



4. Write in noteheads (open or closed) in this bass staff for the requested note names.

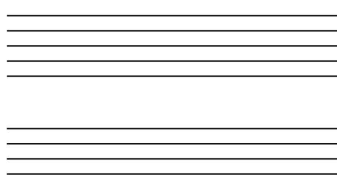


5. Connect the notes on this treble staff using arrows to their corresponding keys on the keyboard.



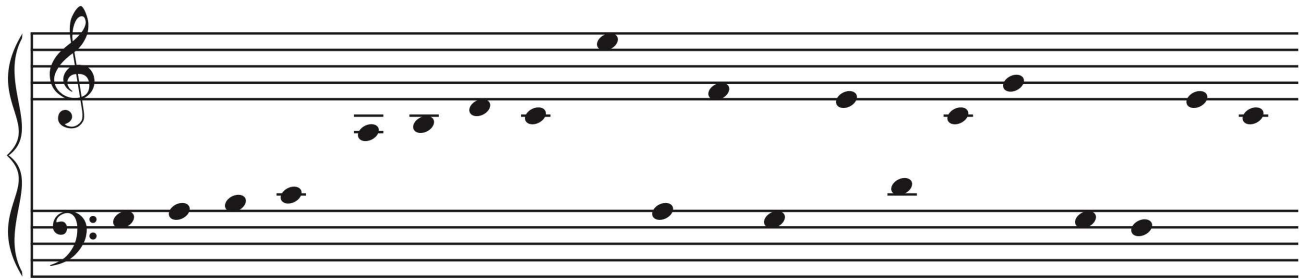
II. Grand Staff

1. Complete this grand staff by connecting the two staves with a vertical line and brace on the left and by drawing in the appropriate clefs.

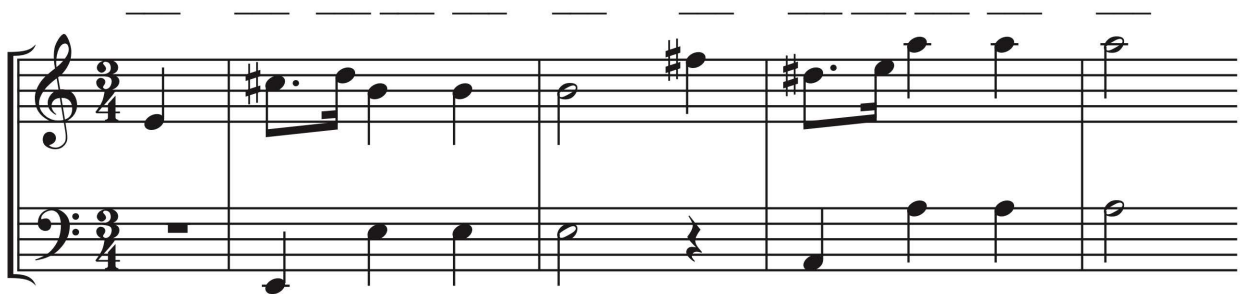




2. Provide letter names for the notes written on this grand staff.



3. Provide letter names for the notes written on this grand staff (this is from a real piece of music, called “Prelude in A Major” by a Polish composer from the mid-1800s named Frederic Chopin). Use the spaces above the grand staff to list the notes in the treble clef and the spaces below for the bass clef.



4. For each key with an ‘X’ on the keyboard, write in the corresponding notehead (open or closed) on the grand staff. Connect from the keyboard to each note with an arrow.

